

ASSEMBLY INSTRUCTION FOR THE STORAGE CONTAINER, TYPE4A

TOOL REQUIREMENTS

- A. 2 no 19mm spanners or socket wrenches
- B. One screw driver
- C. Plastic hammer / mallet

ASSEMBLING TYPE4A STORAGE CONTAINER PACKED CONTAINER

- 1. Place the packed container on an even surface.
- 2. Remove all the bolts and upper coloured corner fittings.
- 3. Remove the 6 or 8 (depending on length) transport link bars between the upper and lower corners fittings. These links should be stored safely for future transportation.
- 4. Lay out the following components
 - a. The roof
 - b. The rear wall panel
 - c. The front door section
 - d. 2 no side wall panels
 - e. A cardboard box of fixings

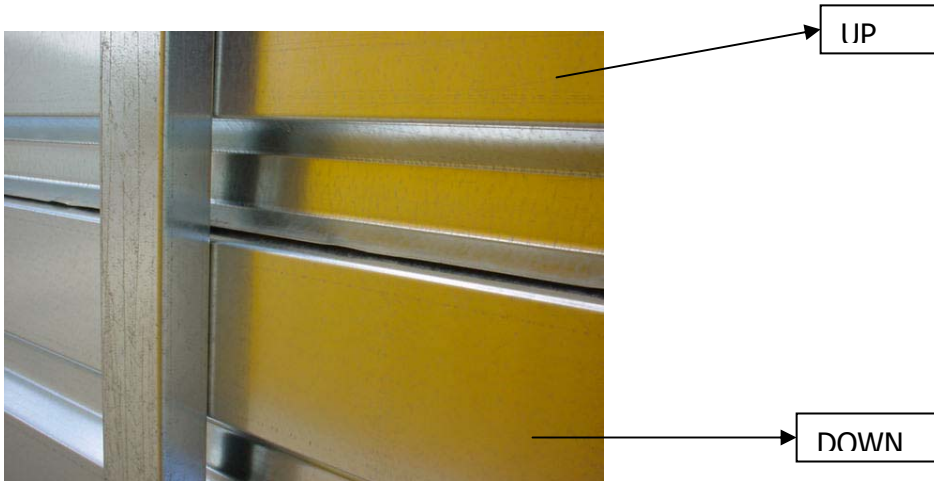
ASSEMBLE THE TYPE 4A CONTAINER AS FOLLOWS

1. FLOOR



Lay out the floor section onto an even surface allowing about 1 metre around for assembly.

2. SIDE WALLS (MAKE SURE THE WALLS ARE THE RIGHT WAY UP OR WATER WILL PENETRATE BETWEEN SHEETS)



- A) Raise the side walls but keep them aslant. Fit the lower edge of the metal-sheet into the edge-profile of the long side of the floor. The framing construction of the side walls must thereby be made to grip the corner fitting.



- B) Raise the side wall to make it approximately 45 degrees outwards.
- C) Locate two short bolts with washers to both end fittings, finger tight to allow movement.



- D) Locate the single LONG bolt with washer to centre fitting, finger tight again allowing for movement.



- E) Carry out repeat operation to erect opposite side wall.



3. BACK WALL

The wooden floor has a lip into which the back wall is fitted, as has the rear vertical edges of the side walls. The L-profile is fitted on the top whereas the double profile is fitted on the bottom.

- A) Carry the back wall panel into the container with the outer edge “vertical lips” facing the rear of the container. Push both side panels outwards this will then allow the back panel to be tilted at about 45 degrees downwards and slip into the lower part of the rim of the side wall profile. The double profile will thereby grip and over the rear edge of the floor.



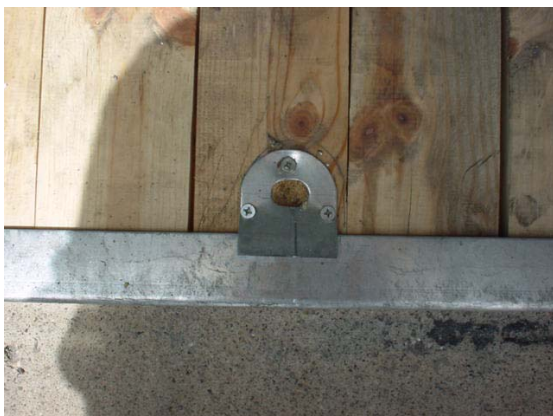
- B) Push both side panels upright and slowly raise the back wall into a vertical position and the whole length of the trapeze metal-sheet will be pushed into the side wall “profile trim”.

4. FRONT FLOOR PANEL

- A) Follow the same procedure as the back wall making sure the panel is the right way up.



- B) Screw the lower-plate (from the cardboard box) onto the wooden floor where the vertical internal door bolt will locate into the floor locking eye.



- C) Assemble the handle and cylinder lock (both to be found in the cardboard box.)

5. THE ROOF

- A) Lift the roof, onto the door end of the container.



- B) Make sure the roof outer edges are overlapping the side walls. One person can then enter the unit and lift the roof over the container until this meets with both the back wall and side walls.



- C) Finally check that the overlapping edges of the roof, are fitted over the top edges of both side walls and front door section then pull down.



6. MOUNTING OF UPPER ANGLE FITTINGS

Attach angle brackets to roof and walls using bolts as per floor/wall brackets.



7. FINAL ASSEMBLY

Finally, tighten all mounting bracket bolts. Fit security bolts, security nuts and split pins to protruding centre bolts from inside the container.

